



UCL Institute of Health Equity



Taking action on health inequalities and improving health equity: The International perspective

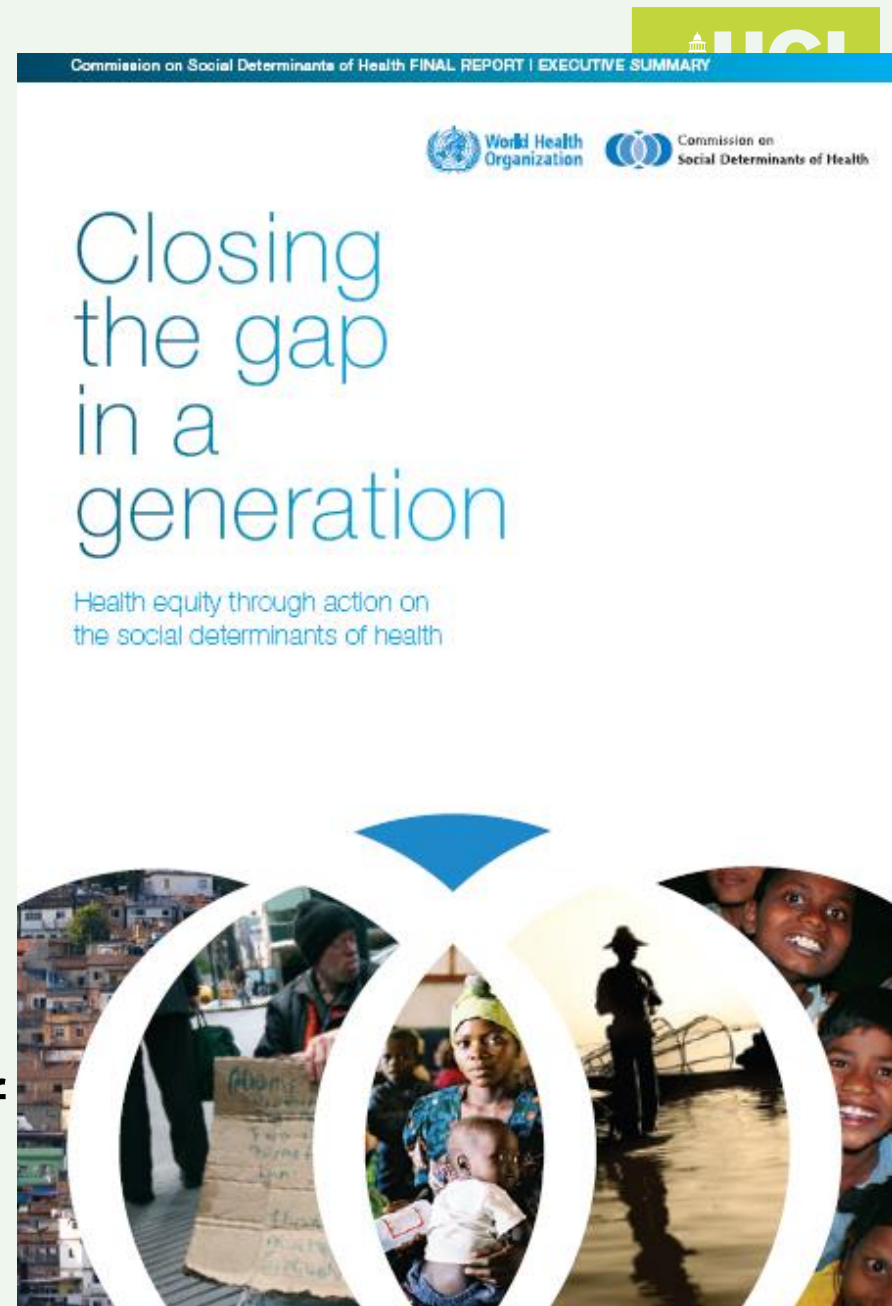
Peter Goldblatt

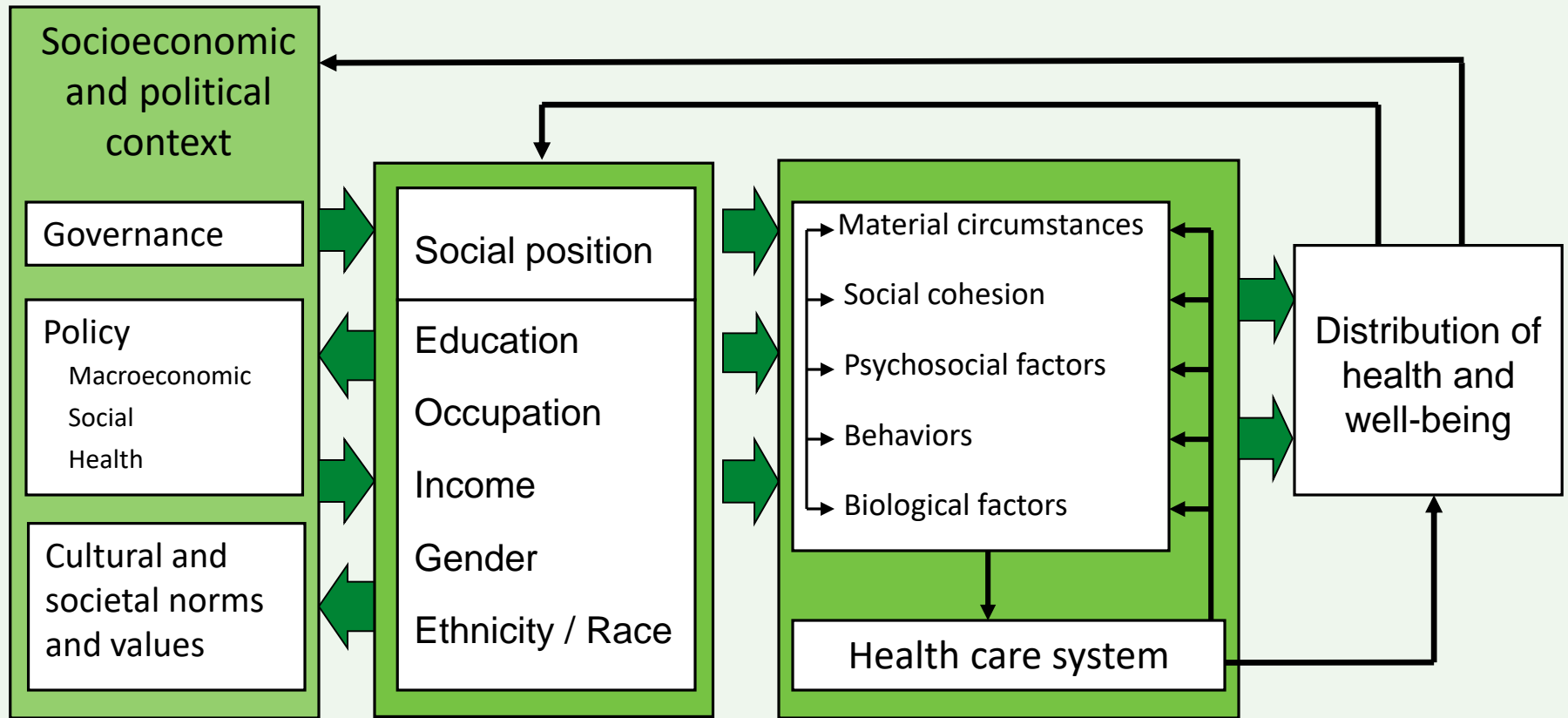
www.instituteofhealthequity.org

October 2017



- Social justice
- Empowerment – material, psychosocial, political
- Improving the conditions in which people are born, grow, live, work and age
- Shaped by distribution of power, money and resources





Social determinants of health and health inequities



Commission on Social Determinants of Health Conceptual Framework

Recommendations of the Commission on the Social Determinants of Health

- Improve the conditions of daily life – the circumstances in which people are born, grow, live, work and age
- Tackle the inequitable distribution of power, money and resources – the structural drivers
- Measure and understand the problem - expand the knowledge base

Health Equity in all Policies

Fair Financing

**Good Global
Governance**

**Early child development and
education**

Healthy Places

Fair Employment

Social Protection

Universal Health Care

**Market
Responsibility**

Gender Equity

**Political empowerment
– inclusion and voice**



equity

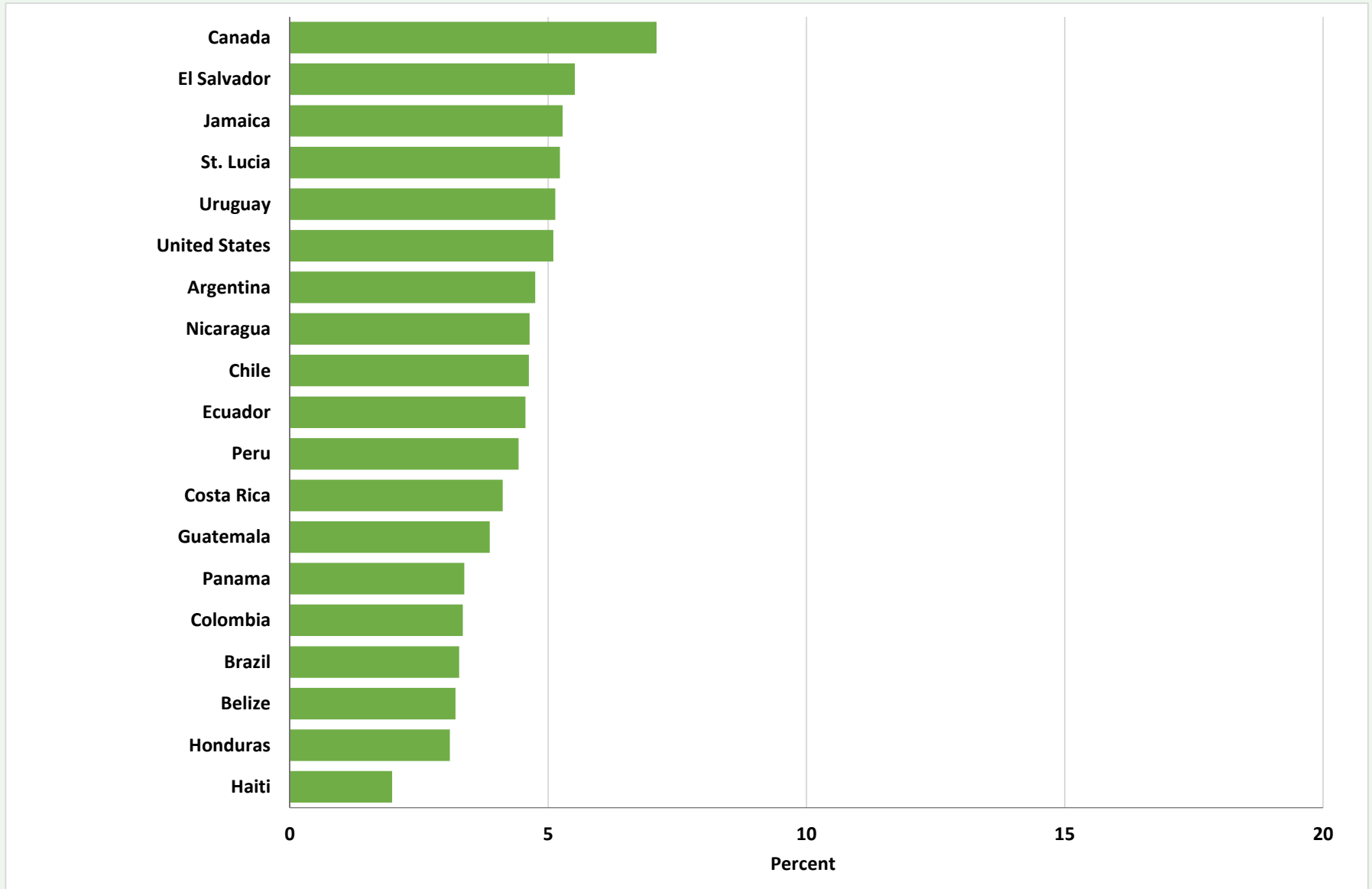
"Public health can be grateful for backing from the Commission on Social Determinants of Health. I agree entirely with the findings. The great gaps in health outcomes are not random. Much of the blame for the essentially unfair way our world works rests at the policy level."

Dr Margaret Chan, 62nd World Health Assembly,
May 2009





Income share held by lowest 20%, Americas



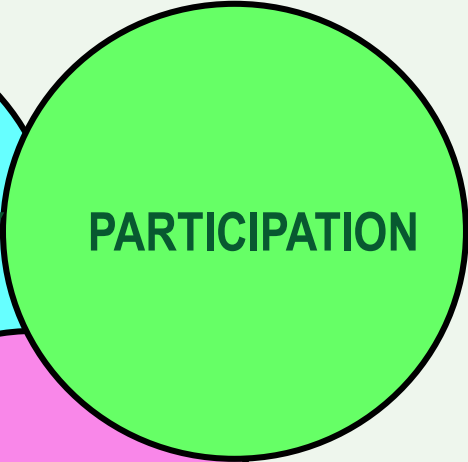
World Health Organization
REGIONAL OFFICE FOR Europe

Governance for health equity

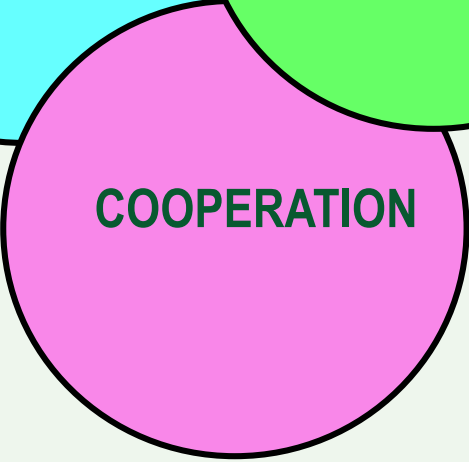
taking forward the equity values of Health of Health WHO E

C
D
H
E

Co Production



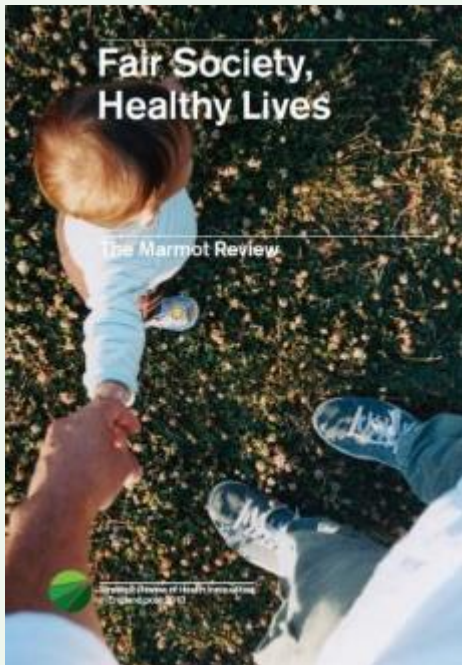
Joint Responsibility



Shared Benefits



Fair Society: Healthy Lives: 6 Policy Objectives



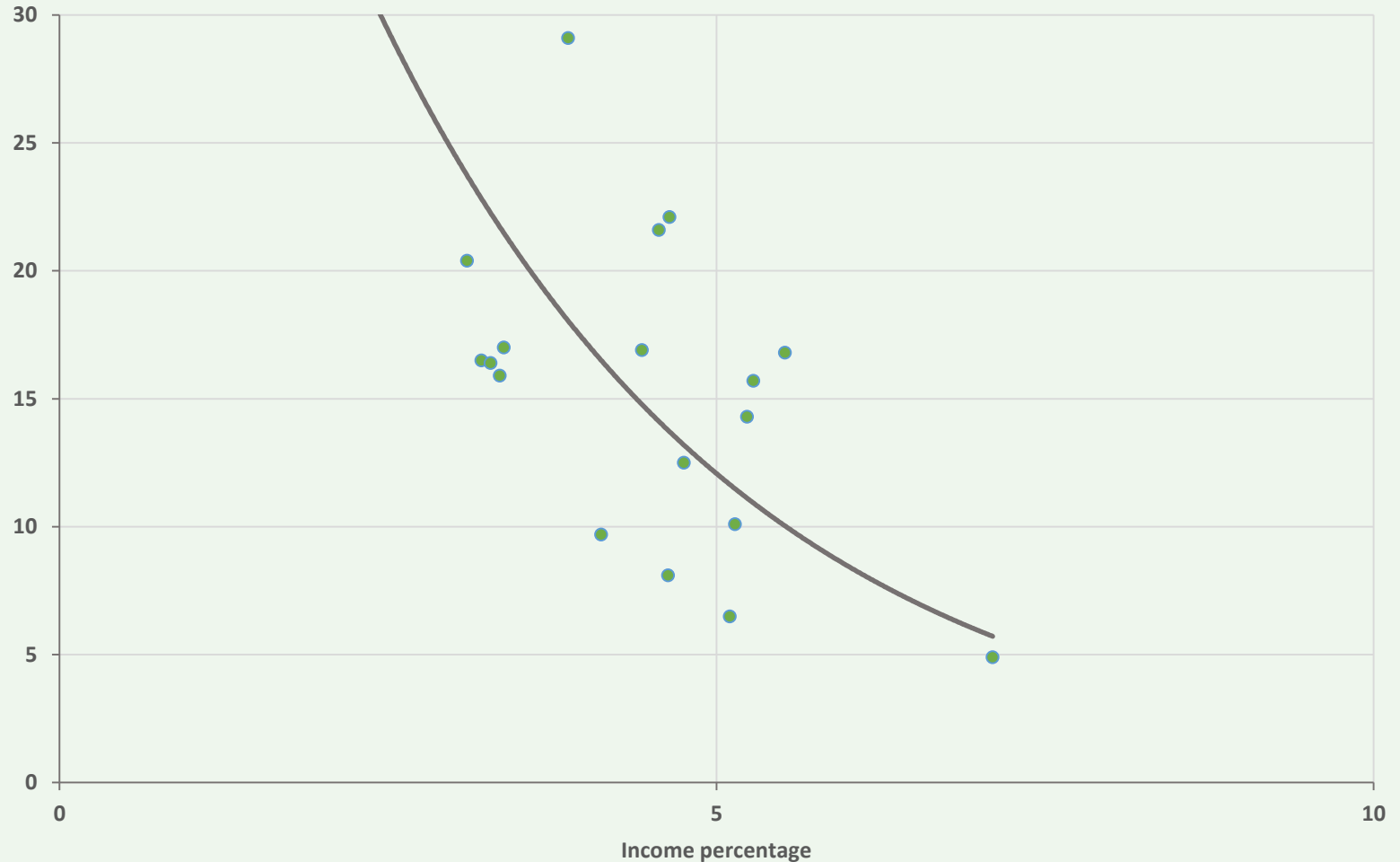
- A. Give every child the best start in life**
- B. Enable all children, young people and adults to maximise their capabilities and have control over their lives**
- C. Create fair employment and good work for all**
- D. Ensure healthy standard of living for all**
- E. Create and develop healthy and sustainable places and communities**
- F. Strengthen the role and impact of ill health prevention**

Intergenerational transmission of inequity



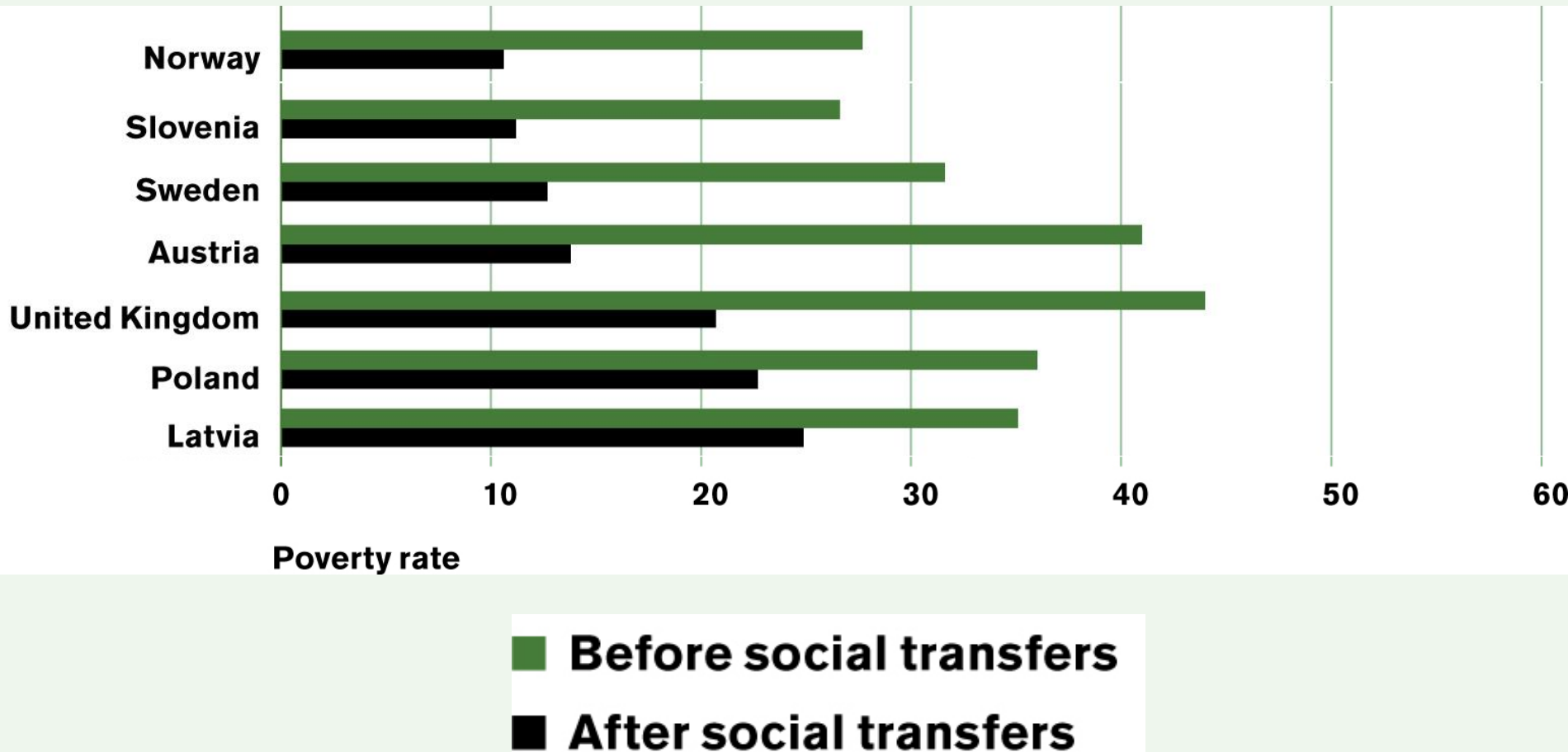
Mortality at age under five in the Americas by income share held by lowest 20%

Deaths per 1,000

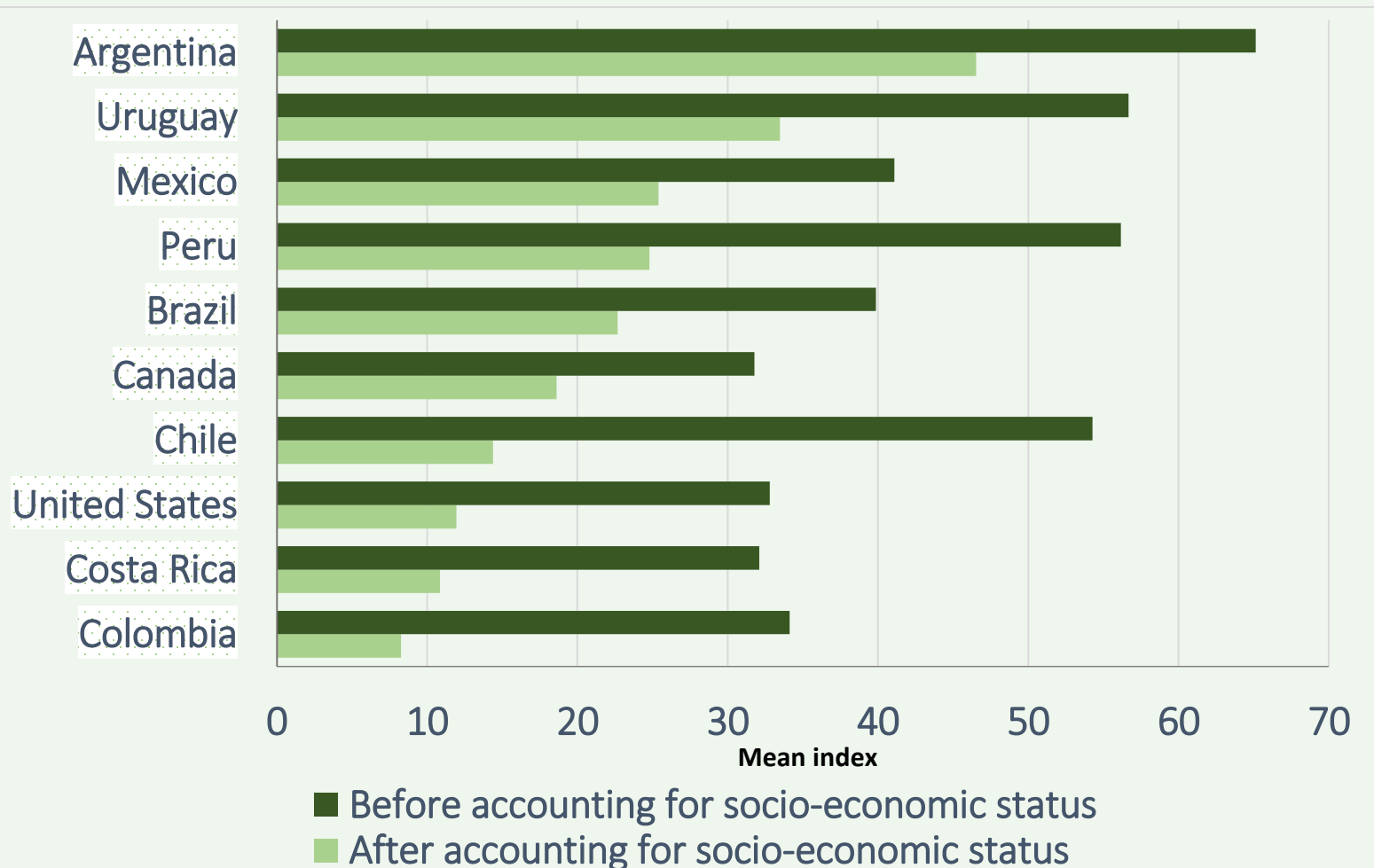




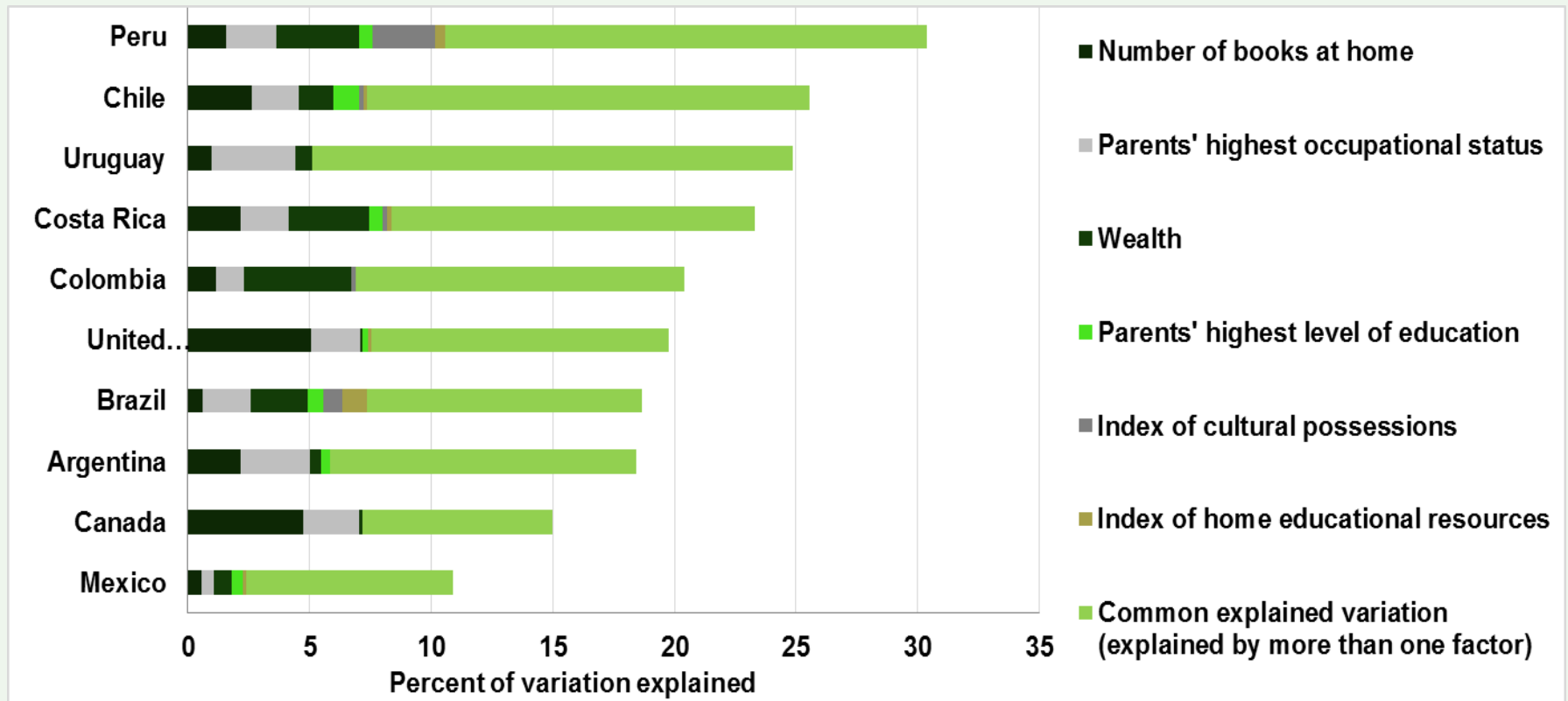
Child poverty rates before and after transfers, ranked by after-transfer rate, EU-SILC 2009



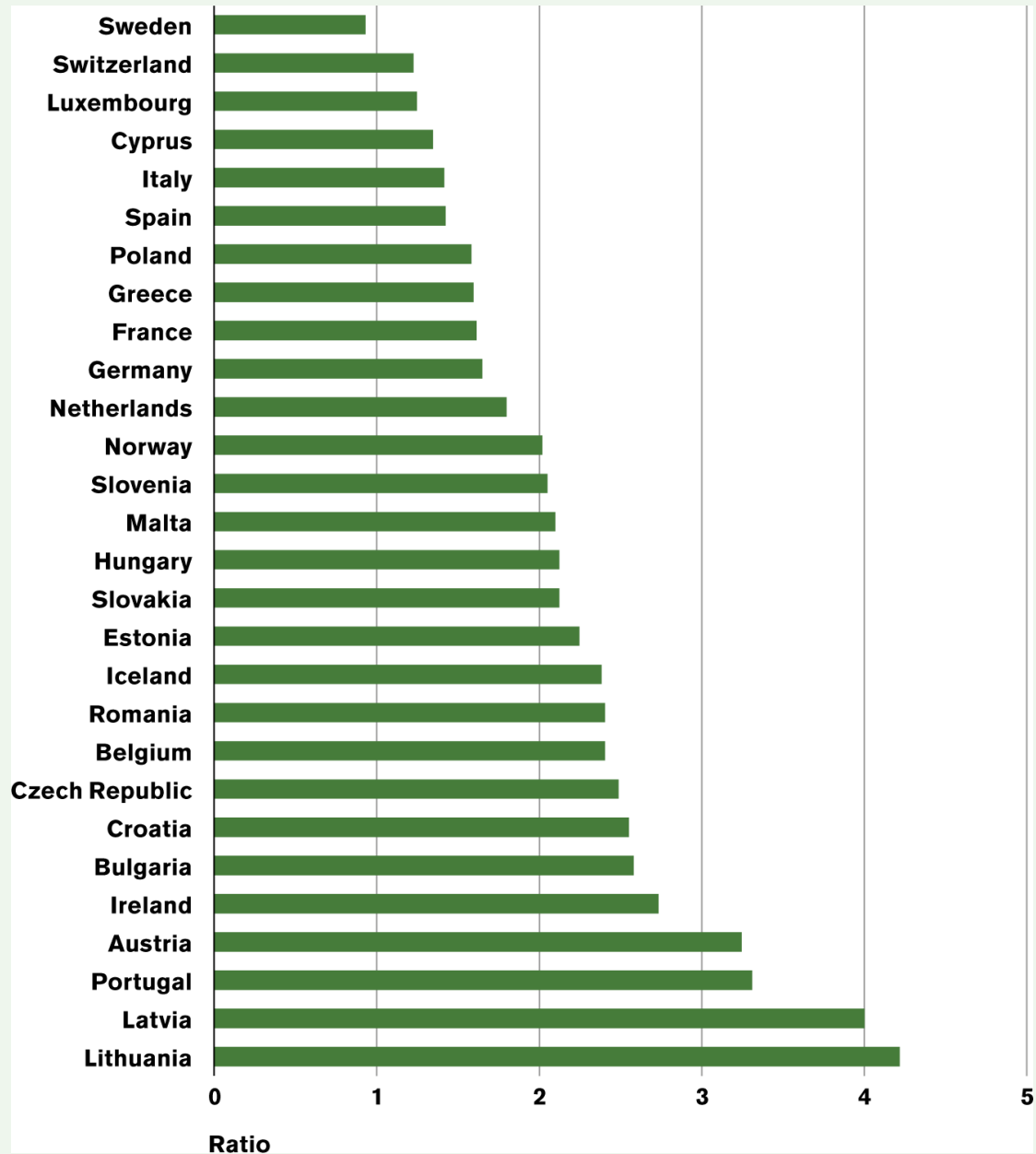
Difference in maths performance between students in the Americas who reported having attended pre-primary school (ISCED 0) for > 1 year and those who had not , before and after accounting for socio-economic status, 2012



Proportion of the variation in mathematics performance in the Americas explained by elements of socio-economic status, 2012



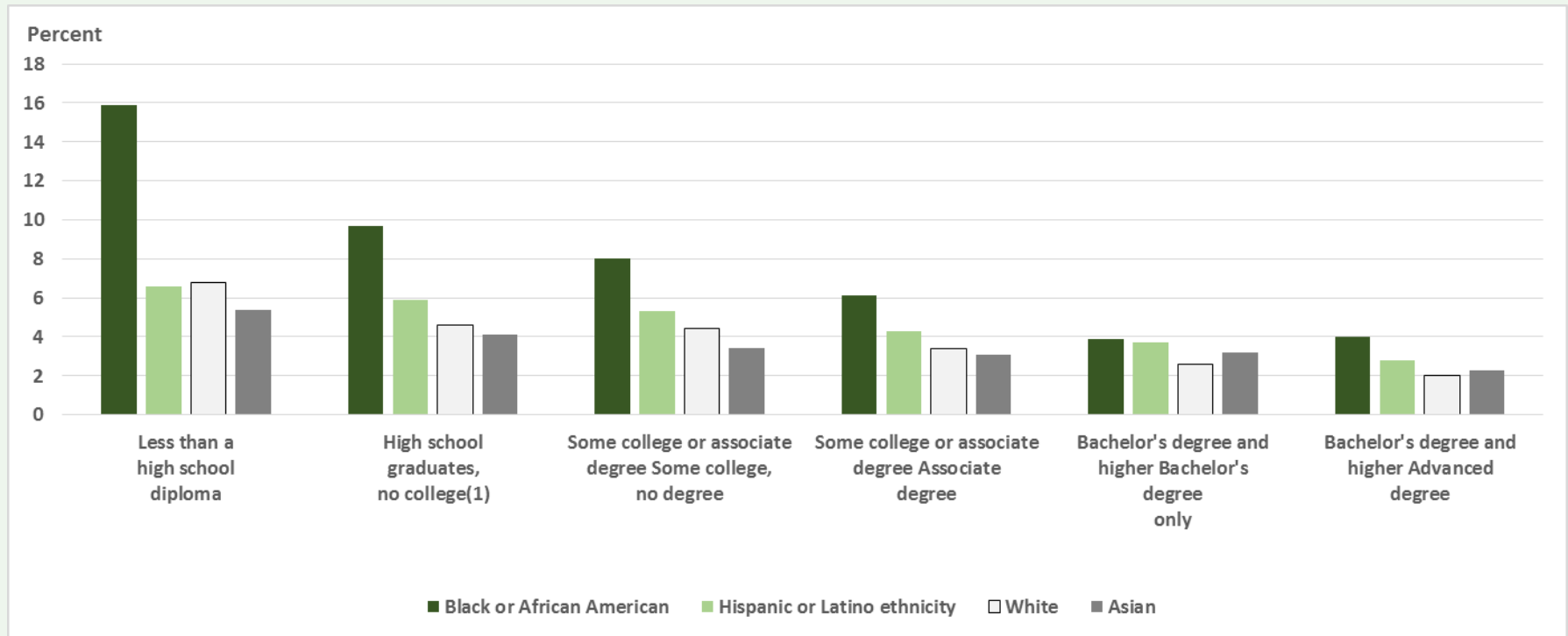
Ratio of poor health among people with primary-level education (level 1) to poor health among those with basic tertiary education (level 5) in selected European Region countries, 2010



Key contribution of work and employment

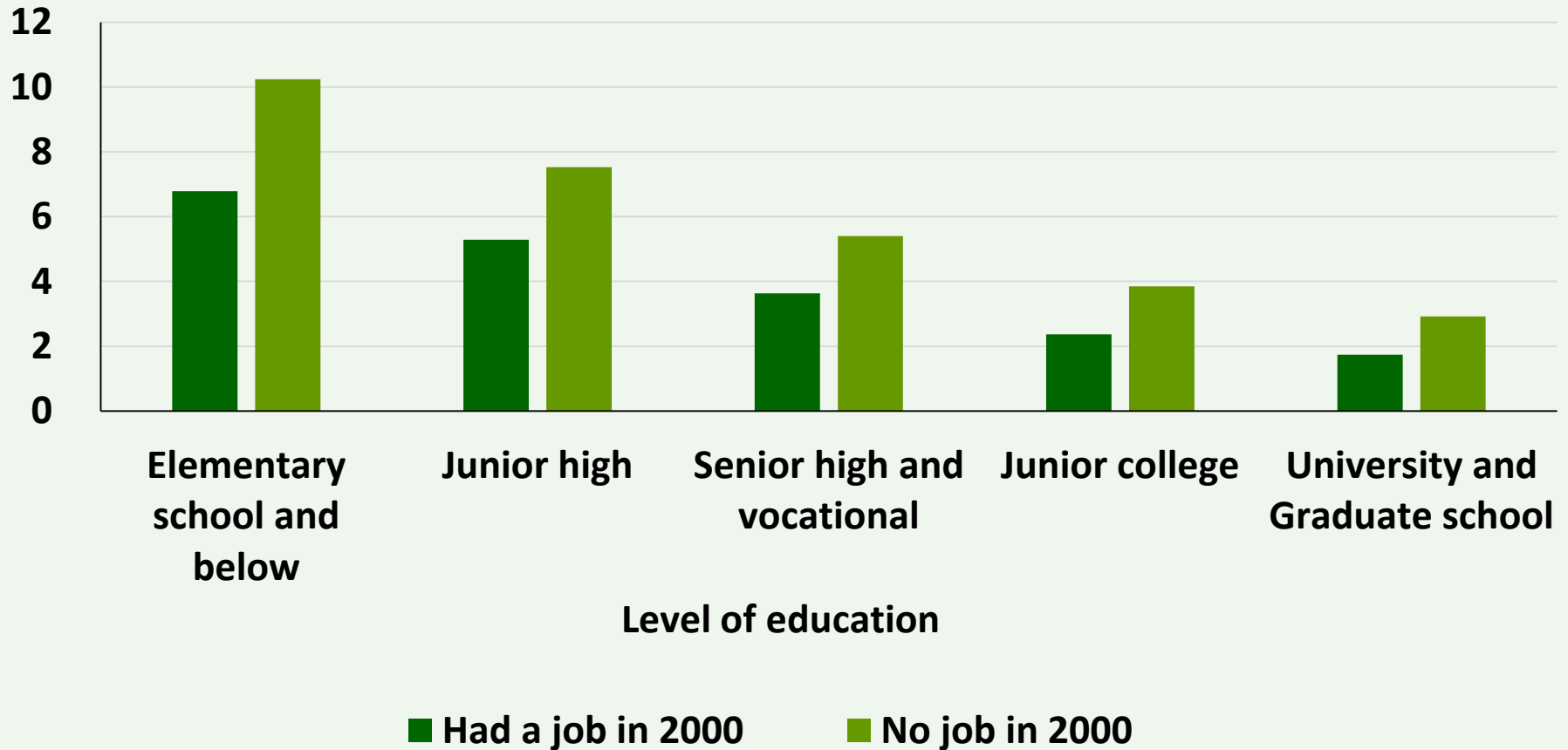
- Participation in labour market
- Appropriate income
- Avoidance of adverse hazards
- Positive psychosocial environment

Unemployment rates by educational attainment and race/ethnicity, USA 2014

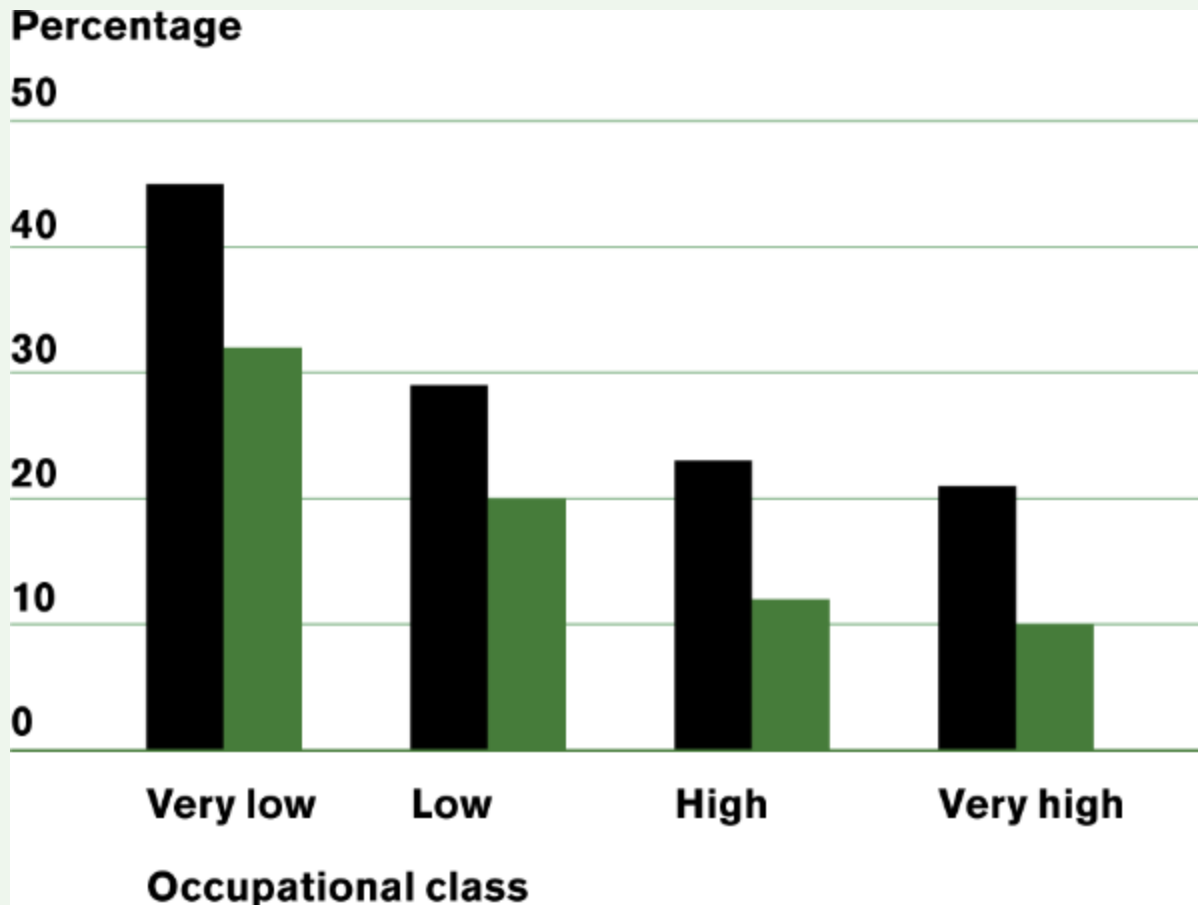


Age standardized mortality in Taiwan in 2001-2010, by level of education and working status for men aged 15-64 at 2000 census

Age standardised mortality



Psychosocial stress and occupational class in the EU



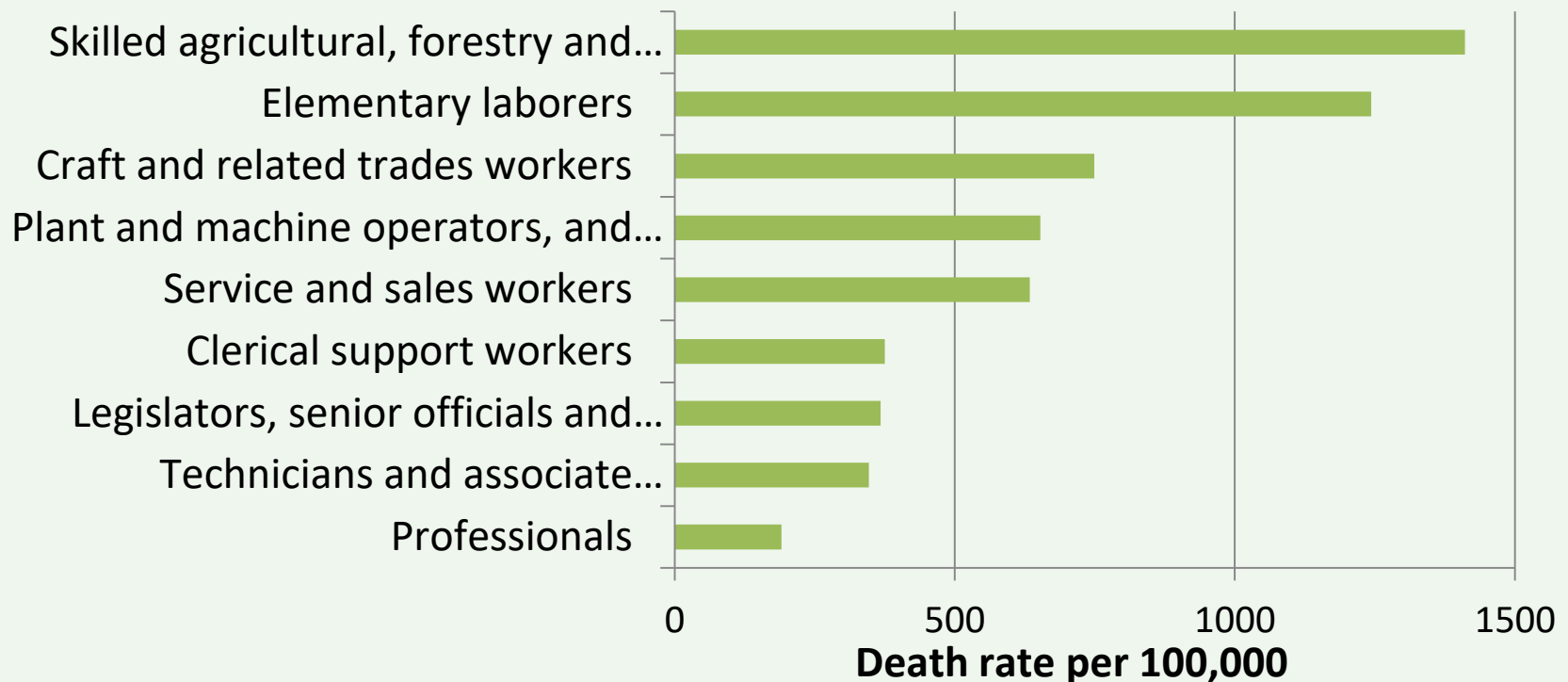
SHARE 2004/2005

■ Effort-reward imbalance
■ Low control

Source: Wahrendorf et al. 2012

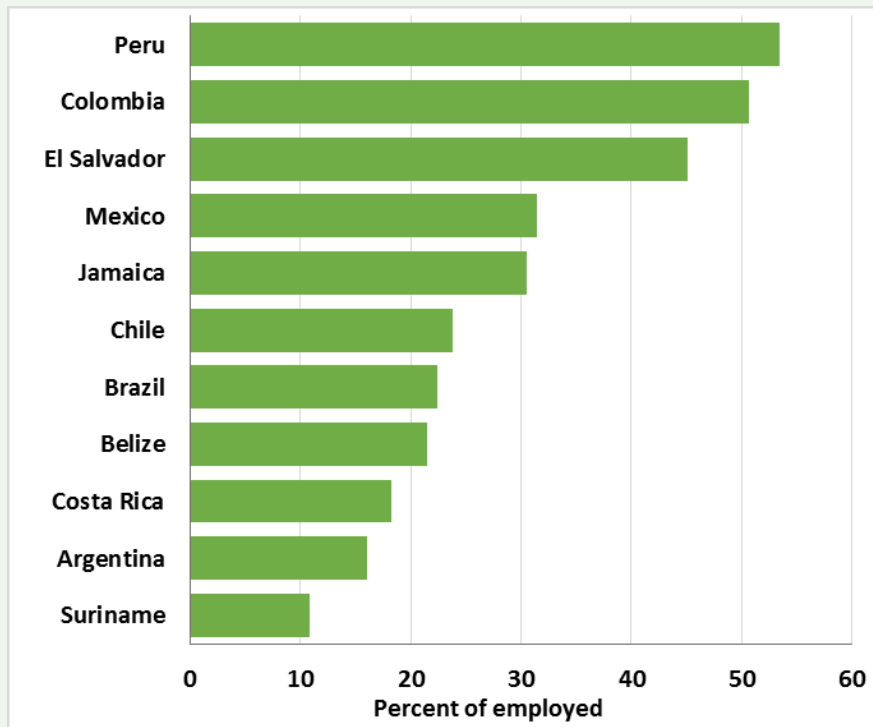
Death rates by occupational group of men in Taiwan aged 25-64, 2011-2013

Occupational Group

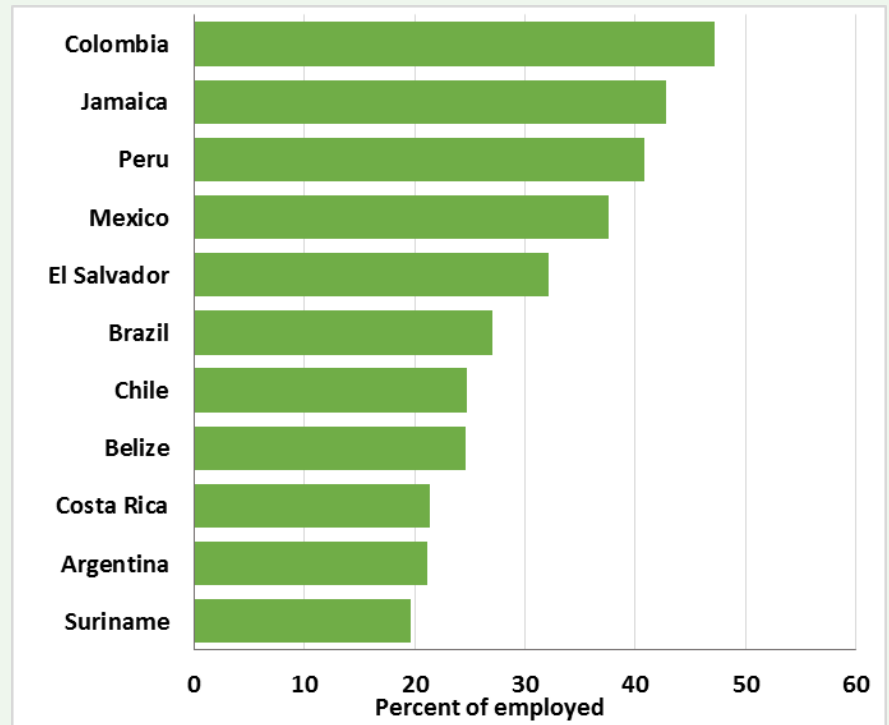


Vulnerable employment in the Americas by sex, 2013*

Female

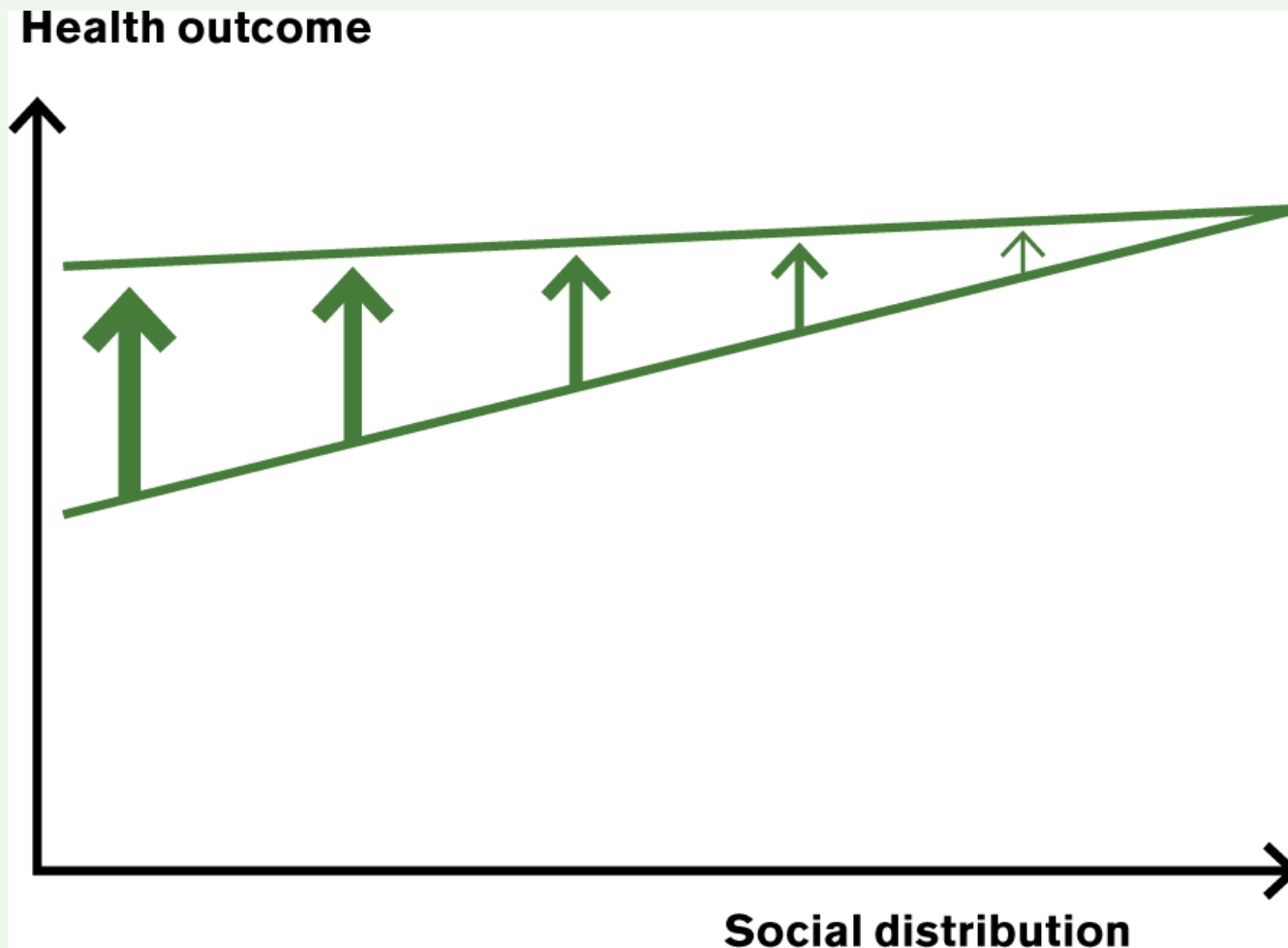


Male

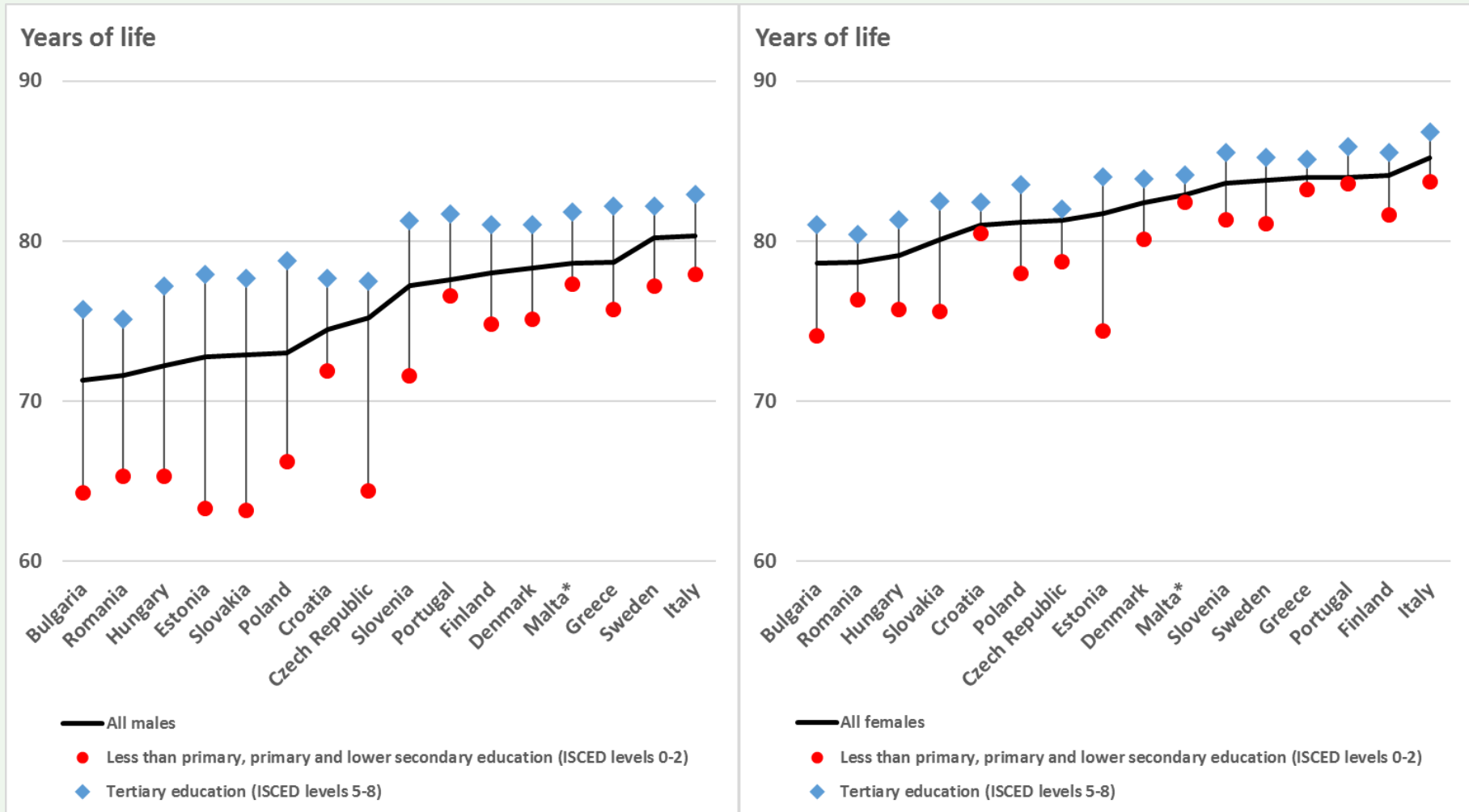


*or latest previous available year

Levelling-up the social gradient in health

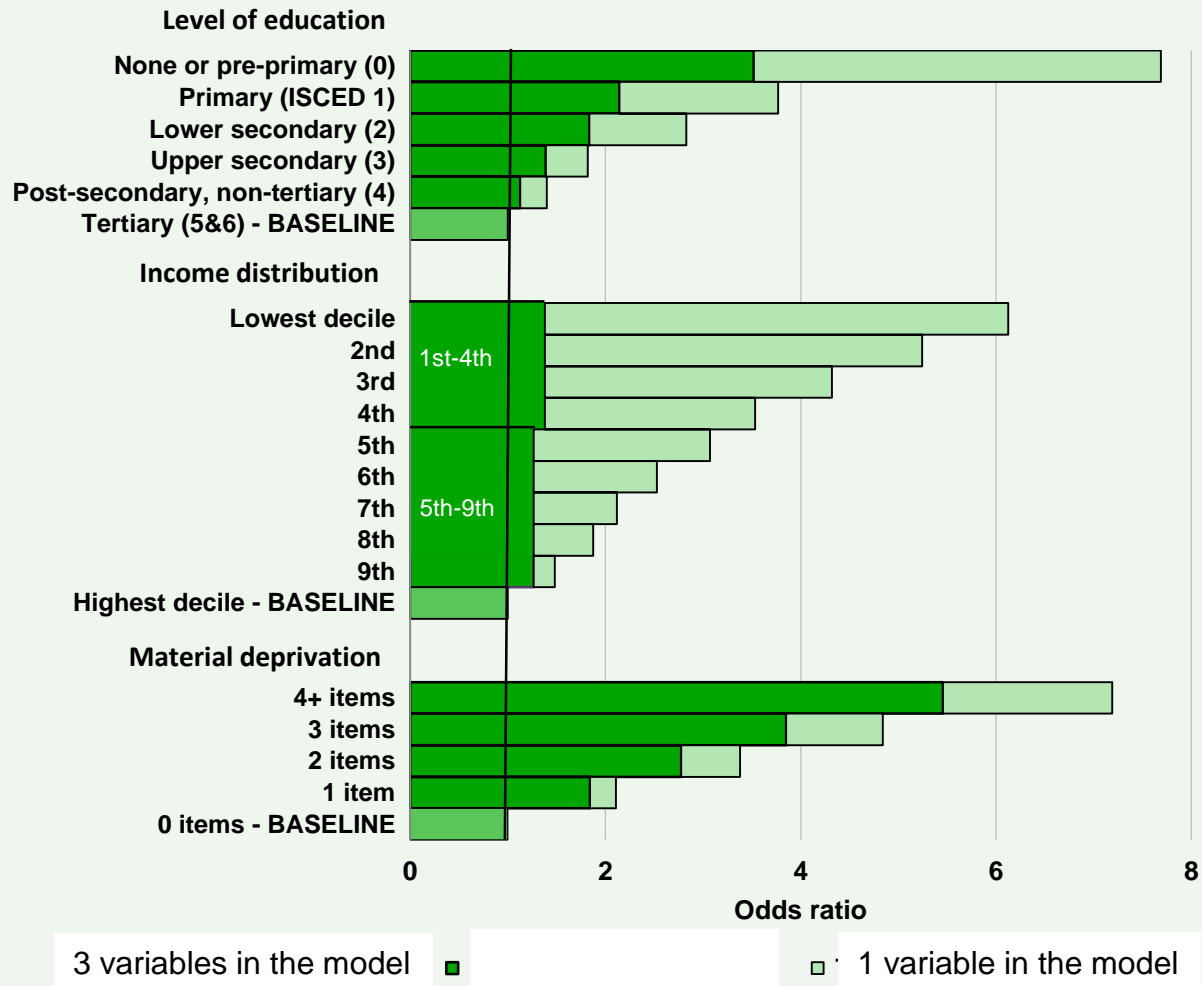


Life expectancy at birth- EU by education and sex, 2013



* Figures for Malta 2011

Estimated odds of reporting poor or very poor general health by socioeconomic characteristics, 25 EU Member States*, 2010



World Health Assembly Resolution May 2009

- All member states:
 - Tackle health inequities through action on the social determinants of health
 - Impact of policies and programmes on health inequities;
 - Health equity in global development goals

UN sustainable development goals:



A photograph of two children in a slum. A girl in an orange shirt and dark pants is crouching on the left, and a boy in a grey and black jacket is running towards the camera on the right. The background shows simple, weathered buildings with red-tiled roofs and a muddy, unpaved ground with puddles.

Health is a human right
Do something
Do more
Do better